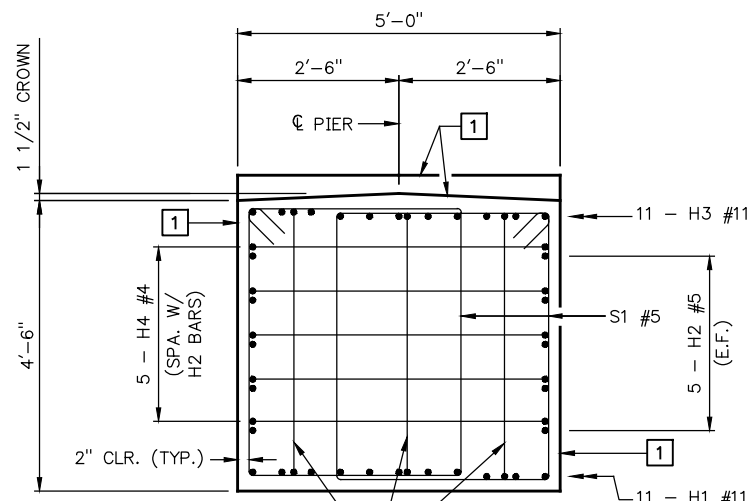
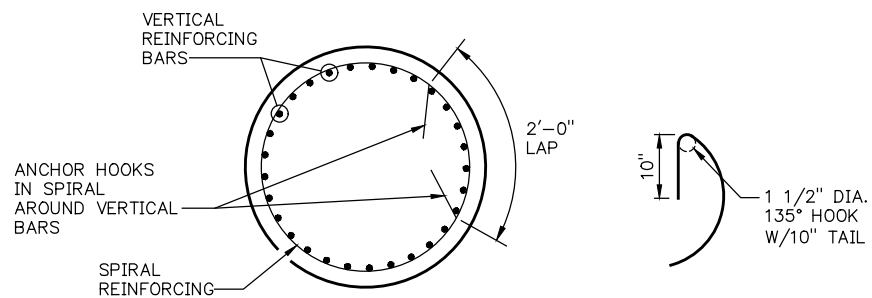


SECTION A-A

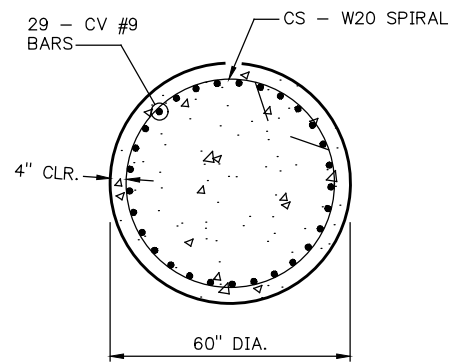


VIEW B-B
(TYP. EACH END OF CAP)
(FOR DETAILS NOT SHOWN, SEE SECTION A-A.)

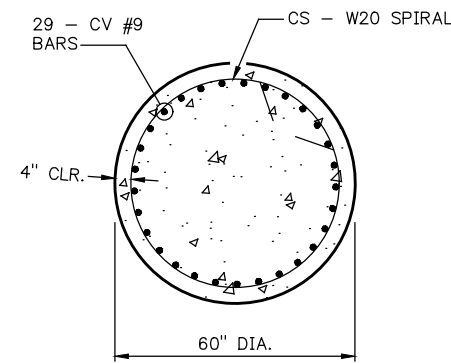


SPIRAL REINFORCING SPLICE DETAIL

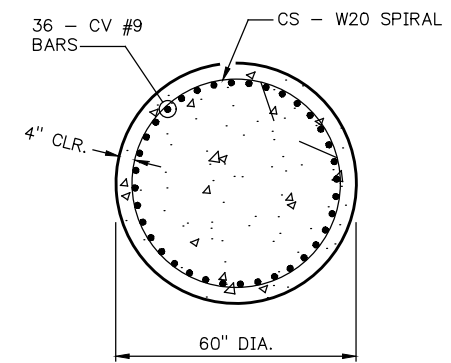
NOTE: SPIRAL BARS SHALL CONFORM TO AASHTO M32. SPIRAL BAR LENGTHS DO NOT INCLUDE LAPS. IF LAPS ARE REQUIRED, THE LENGTH OF THE LAP SHALL BE 2'-0" WITH 10" HOOKS.



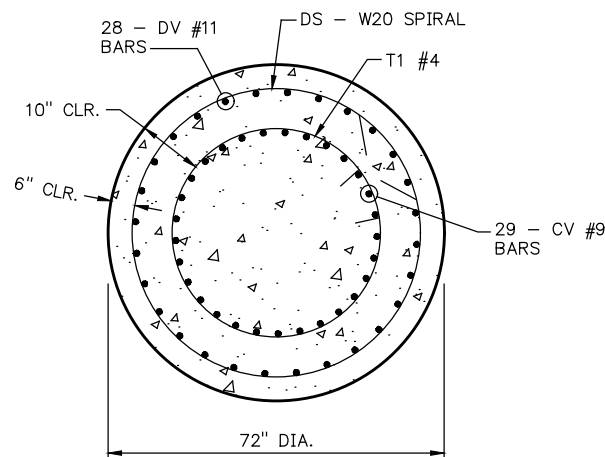
SECTION C-C



SECTION E-E

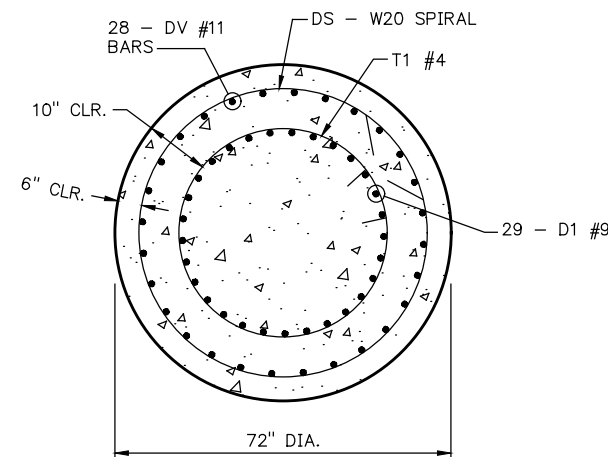


SECTION G-G



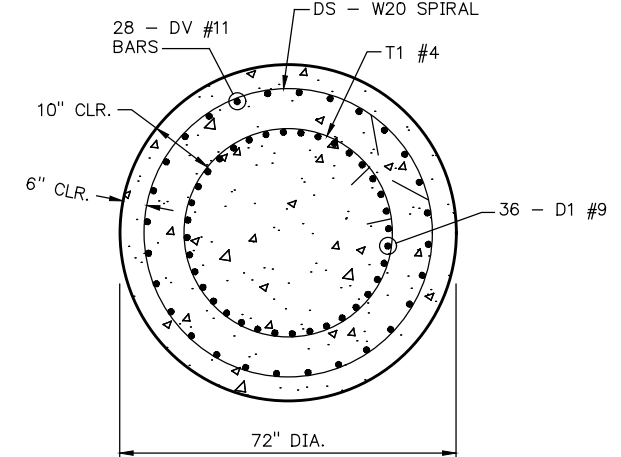
SECTION D-D

PIERS 1 AND 9



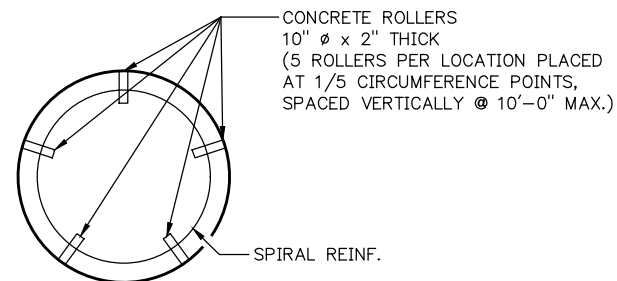
SECTION F-F

PIERS 2 AND 3



SECTION H-H

PIERS 4-8

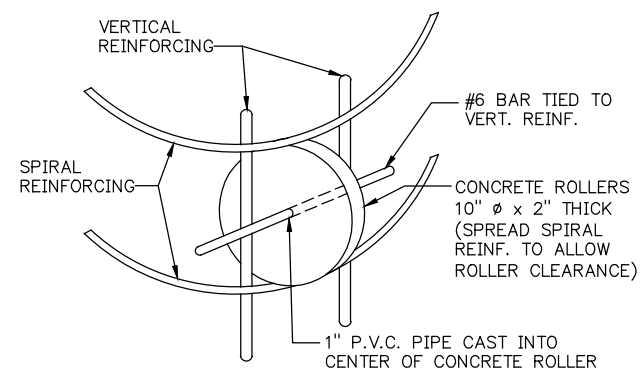


ROLLER PLACEMENT DETAIL

ROLLER NOTES:

CONCRETE USED IN THE CONCRETE ROLLERS SHALL HAVE A MINIMUM 28 DAY COMPRESSIVE STRENGTH OF 4000 PSI. SLAB BOLSTERS, HIGH CHAIRS, AND PLASTIC ROLLERS SHALL NOT BE SUBSTITUTED FOR THE CONCRETE ROLLERS.

ALL MATERIALS, LABOR, AND INCIDENTALS REQUIRED FOR THE INSTALLATION OF THE CONCRETE ROLLERS TO BE INCLUDED IN THE PRICE BID FOR "DRILLED SHAFTS 72" DIAMETER".



DETAIL OF ROLLER INSTALLATION

1 TREAT TOP OF PIER CAP, INCLUDING ALL SURFACES OF PEDESTALS, AND ALL VERTICAL FACES OF THE PIER CAP WITH A PENETRATING WATER REPELLENT SURFACE TREATMENT.

NOTES: E.F. - DENOTES EACH FACE

ALL DIMENSIONS AND DETAILS ARE TYPICAL FOR PIERS 1 THRU 9 UNLESS NOTED OR SHOWN OTHERWISE.

FOR BAR LISTS, BAR BEND DETAILS AND QUANTITIES, SEE SHEET NO. 48.

PIER DETAILS

(SHEET 3 OF 4)
BRIDGE "A" C.R.L. STA. 586+80.46

State Job No. 28768(04) Sheet No. 47